

Animal Prints with Meaning



Lisa Crubaugh
 Visual Art Teacher
 Sammamish High School
 Phone: 425-456-7628
 FAX: 425-456-7630
 100 140th SE
 Bellevue, WA
 98005

National Board Certified Teacher
 EAYA / Art
crubaughl@bsd405.org

Washington: **ART** is core
 Washington Art Teachers Association

WASH STATE UNIVERSITY
 SCHOOL OF ARTS & DESIGN



www.bsd405.org
 Academics Curriculum & Services
 High School / Academics & Curriculum
 Student Art Gallery



Manataka American Indian Council

TOTEM POLES

OF THE GREAT NORTHWEST



The first totems were carved from mature cedar trees and used in the Potlatch ceremonies of families-clans of the Pacific Northwest, primarily Alaska and British Columbia. They were carved to represent the emblem of the family as a reminder of its history.

A totem is carved and placed at the front entrance of the family longhouse to honor its ancestors, the clan's standing, rights and accomplishments, to record a memorable ceremony or record a spiritual experience. A totem pole is a symbol of the qualities, experience and exploits of the clan.



The totem carvings tell a story, revealed only if one knows the meaning assigned to various animals, fish, birds and designs and where they are placed on the pole. There were a number of reasons why a particular figure or design was chosen by a clan. The connection between the clan and the various figures carved into the pole may have been as a result a special gift from the animal, fish or bird spirits. Or, there may have been a recent encounter with that figure. Some clans claimed to be descended from certain totem figures.

The meaning of many totem poles is lost with time. Even some of today's totem poles cannot be understood except from one person - its owner. Understanding the symbolism and stories hidden within the totem pole is more than a simple exercise in learning the attributed meanings of the figures. It is possible to know the meaning assigned a figure by the people of the Northwest, but it is not always possible to know its significance to the over-all story.



Totem figures are not Gods. Totems are not worshiped like religious icons nor used as a talisman. They were never used to ward off evil spirits and claims of bizarre, magical "totemism" practices are fiction. A totem pole may be compared to the symbolism portrayed in the Great Seal of the United States or a Coat of Arms. These national emblems are roughly equivalent to the meaning bound up in a totem pole except they identified clans not an entire nation.

Totem poles are carved today by both native and non-native people. They have become a highly valued art form and a symbol of pride and tradition for the people of the Pacific Northwest.

We invite you to discover the wonderful stories and wisdom contained in totem poles. To learn more about totem poles, visit excellent internet resources:



Photos shown on this page courtesy of [Everything Alaska.com](http://EverythingAlaska.com)
Visit Alaska - where great views and great people await!

SYMBOLS OF INDIGENOUS PEOPLE

Northwest

BEAVER	Creative, Artistic and Determined
BEAR	Strength, Learned Humility, Motherhood, Teaching
BUMBLEBEE	Honesty, Pure Thinking - Willingness and Drive
COPPER	Wealth and Prestige
DOGFISH	Persistence and Strength - A Born Leader
DOVE	Love, Gentleness and Kindness
DRAGON FLY	Ever-changing Life
EAGLE	Great Strength, Leadership and Prestige
EAGLE FEATHER	Good Luck to Both Giver and Receiver
FROG	Spring & New Life - Communicator, Stability
HALIBUT	Life protector, Strength and Stability
HAWK	Strength Far Sighted
HERON	Patience, Graceful and Easy Going
HUMMINGBIRD	Love, Beauty, Intelligence, Spirit Messenger
KILLER WHALE	Traveler & Guardian - Symbol of Good
KINGFISHER	Luck, Patience, Speed and Agility
LOON	Peace, Tranquility - Generous Giving Nature
MOON	Protector and Guardian of the Earth by Night
OTTER	Trusting, Inquisitive and Bright - Loyal Friendship
OWL	Wisdom
RAVEN	Creation & Knowledge - Bringer of the Light
SALMON	Dependability and Renewal - A Provider
SEAL	Bright, Inquisitive, Organized
SUN	Healing Energy, Guardian of the Earth by Day
THUNDERBIRD	Powerful & Mystical - A Leader
WOLF	Intelligence & Leadership - Strong Sense of Family

- **Alligator** - stealth, survival
- **Ant** - diligence, industry, community, remarkable strength, hard working, success, patience
- **Antelope** - action
- **Armadillo** - boundaries, self protection
- **Badger** - aggressiveness, passion and drive
- **Bat** - rebirth, longevity, joy, good luck
- **Bear** - gentle strength, dreaming, introspection, power, protection
- **Beaver** - builder, accomplishing goals
- **Bee** - divine messenger, love, service, gathering, community
- **Bird** - enlightenment, perspective, swiftness, vision, prophetic knowledge
- **Boar** - nature-based wealth, prosperity, success, protection, courage
- **Buffalo** - prayer, abundance, survival needs met, good fortune, healing
- **Bulls' horns** - a good symbol in meditation for motivation
- **Butterfly** - rebirth, the soul, transformation, the three phases of life
- **Cat** - feminine energy, mystical power, used to keep the wearer safe in travel, wholeness



- **Chameleons** - ever-changing future, inconsistency
- **Cheetah** - speed, focus

- **Eagle** - courage, spirit, bravery, strength
- **Elephant** - commitment, strength, astuteness



- **Elk** - stamina, pride, power, majesty
- **Fish** - miracles, providence, sea/water magic, good luck and prosperity, foresight, fortune, salmon in particular, are associated with knowledge
- **Fox** - camouflage, adaptability, integration, tricksters, shape shifters, and possessors of great magic
- **Frog** - healing, cleansing, messages, health, honesty, fluidity, purification
- **Gazelle** - awareness
- **Giraffe** - grounded vision



- **Goat** - tenacity, diligence, can help to achieve goals, endure criticism, and stay safe. Goat's fur or foot - an anti-evil talisman.

- **Lizard** - dreaming, foresight, ancient secrets
- **Lynx** - secrets
- **Monkey** - benevolence, drives away evil
- **Moose** - self-esteem, assertiveness
- **Mountain Lion** - wisdom, leadership
- **Mouse** - frugality, rebirth, scrutiny
- **Opossum** - strategy, diversion
- **Otter** - medicine (woman), balanced feminine energy
- **Owl** - deception, wisdom, clairvoyance, magic
- **Ox** - evil spirits that disturb lakes, rivers, and seas
- **Peacock** - wholeness, dignity, beauty, recognition, self assurance, pride
- **Pig** - rebirth and rejuvenation
- **Porcupine** - innocence
- **Rabbit** - fear, fertility, moon magic, speed, swiftness, longevity, courage, strength
- **Raccoon** - dexterity, disguise
- **Raven** - magic
- **Robin** - growth, renewal
- **Rooster** - courageous, warlike disposition, warmth and life of the Universe
- **Scorpion** - the "fire within" that often needs careful tending
- **Seal** - inner voice
- **Sheep** - sacrifice
- **Snake** - cunning, evil, supernatural power
- **Spider** - destiny, fate, weaving
- **Squirrel** - gathering
- **Swan** - grace
- **Tiger** - courage, bravery, fierceness, strength, being in the now
- **Turtle** - mother earth
- **Water buffalo** -

- **Cougar** - power, swiftness, balance
- **Cows** - red cows are a symbol of hope, inspiring symbol for nurturing efforts
- **Coyote** - trickster
- **Crane** - longevity. A pair of cranes symbolizes "Long Marriage"
- **Cricket** - good luck charm, singing, Spring, fertility
- **Crow** - sacred law, gateway to supernatural, shape shifting, illusion
- **Deer** - graceful gentleness, sensitivity, compassion, kindness
- **Dog** - companionship, health, service, loyalty, protection, future prosperity



- **Dolphin** - manna, joy, childlike play, helpfulness, breath of life, harmony, intelligence, self connection
- **Donkey** - fertility, easy childbirth, efficiency, health, well-being, and luck
- **Dove** - peace, innocence, fidelity, love, gentleness, kindness
- **Dragonfly** - good fortune, magic, vision, dreams, luck, and ancient knowledge, illusion
- **Dragon** - wisdom due to long lives and potent magic, royalty, Emperor, eternity, courage, strength, rain, Spring

- **Goose** - safe return, love of home
- **Grasshopper** - nobility, prosperity
- **Hawk** - messenger, strength, foresight, truth
- **Hippopotamus** - emotional depths
- **Horses** - power, stamina, speed, transportation and communication - A black horse with a white marking on its forehead is lucky
- **Hummingbird** - joy, pure love, celebration of life
- **Ladybug** - delight, trust
- **Lamb** - filial piety (dutiful respect or regard for parents).
- **Lion (baby) cubs** - inspire mercy and gentleness.
- **Lion (grown)** - inspire strength, courage
- **Lions** - pride, nobility, cunning, courage, just laws, fairness, the sun, images can protect sacred ground.



- **Weasel** - stealth
- **Whale** - record keeper
- **Wolf** - teacher, A Guide to the Sacred
- **Zebra** - Individuality





Animal Print Planning Worksheet

Narrow choices to **ONE SUBJECT**. Paste 4 photos into this document that will inform your drawing for your print:
Use “Art Image Websites” resource in the pick up box



SAVE AS “Your last name_Animal” to your documents and drag/drop a copy in “2 Crubaugh Ceramics Drop Box”



These are examples.
Delete the pictures on this page
Replace with images you find on the Internet

Realistic Resource
Indicate Website / Required!



Realistic Resource
Indicate Website / Required



Resource from Art
Indicate website / Required!



Another resource from *any* website
Indicate website / Required!

What personal meaning does this subject (animal) have for you?

When finished, SAVE AS to your documents (Name: Last Name_Animal), then drag a copy from your documents into the CRUBAUGH_DROP BOX in the Drop Box folder on the Desktop.



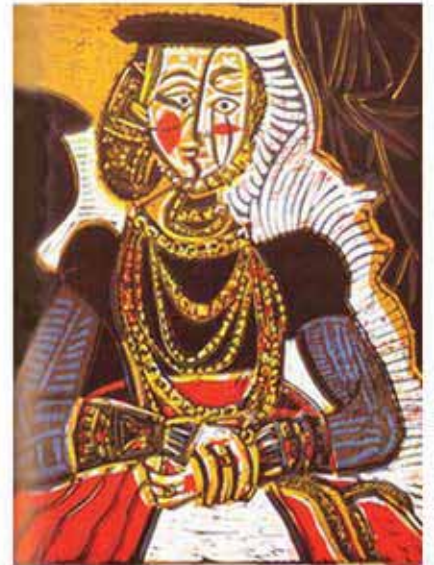
Carl Eugen Keel



Irving Amen



Ernst Kirschner



Picasso



Stanley Donwood (artist for Radiohead)



Jennifer Danderson

Linocut Examples



aart2theextreme



Julie Warren



Francisco Mora Zapata

Francisco Mora El Arbol 1950 Francisco Mora El Fotografo 1941



Francisco Mora El Pan 1945



Francisco Mora Zapata II



Dennis Cunningham, 1995
Wild Future Wet Hands



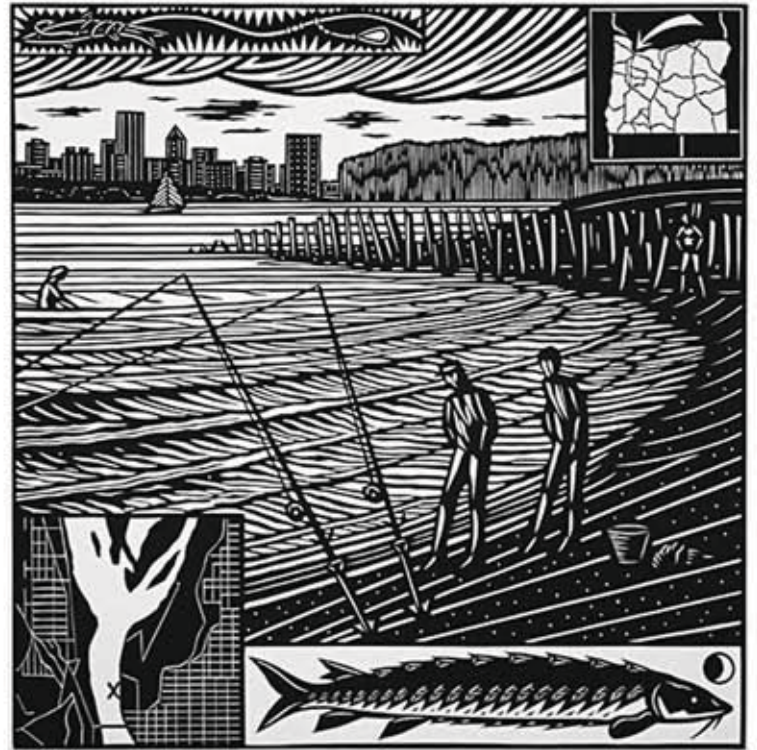
Dennis Cunningham, 1995
Trout Need Trees



Dennis Cunningham, 1995
The Same But Different



Dennis Cunningham, 1991
Big Fish



Dennis Cunningham, 1986
Willamette

Name: _____

Period: _____

Animal Print with Meaning/ Self - Assessment

Criteria for grading:	6-7 novice	8.5 skilled	9-10 mastery
Test Strip Tested texture making/value with tools. Created 1 inch squares for border design.			
Black & White Prints (Best on top) Areas of Black. Areas of White. At least 2 areas of texture. Background adds to animal design.			
Color Prints Good details with use of color. Either colored paper or colored ink. Use of multiple colors &/or gradients should maintain contrast of print.			
Digital Print Enhanced border for print 1 of your test squares. Digital color added. Narrative added.			
Extra Work? (added points) Collaged prints, Multiple color prints, etc.			
Total Score	/40		
<p>(Novice): more practice and improvement is required to achieve desired results of the criteria. (Skilled): Overall goals met for criteria. (Mastery): Exceeds the "skilled" criteria with creative/confident use of materials and skills.</p>			

Why did you choose this animal?

What would you change next time?

Name: _____

Period: _____

Animal Print with Meaning/ Self - Assessment

Criteria for grading:	6-7 novice	8.5 skilled	9-10 mastery
Test Strip Tested texture making/value with tools. Created 1 inch squares for border design.			
Black & White Prints (Best on top) Areas of Black. Areas of White. At least 2 areas of texture. Background adds to animal design.			
Color Prints Good details with use of color. Either colored paper or colored ink. Use of multiple colors &/or gradients should maintain contrast of print.			
Digital Print Enhanced border for print 1 of your test squares. Digital color added. Narrative added.			
Extra Work? (added points) Collaged prints, Multiple color prints, etc.			
Total Score	/40		
<p>(Novice): more practice and improvement is required to achieve desired results of the criteria. (Skilled): Overall goals met for criteria. (Mastery): Exceeds the "skilled" criteria with creative/confident use of materials and skills.</p>			

Why did you choose this animal?

What would you change next time?